

## COUPLE KICK OFF RETIREMENT BY BUILDING THEIR OWN HOME

David and Lisa Stuart wanted to design their own home – and thanks to Paal’s flexibility, they got exactly the outcome they wanted.

With retirement just around the corner, the couple decided to put off their plans to travel around Australia and instead build a house from scratch. To get more for their money, they left Brisbane for 10 acres in Severnlea, near Stanthorpe.



*Lisa and David Stuart adapted the popular Elizabeth design, making unique modifications.*

### DESIGN FLEXIBILITY

“One of the boxes we needed to tick was a new home,” David said. “We went to the home show and saw a few designs, but they were not what we wanted.”

With help from Mauree Grace and Jamie Thomson of Paal in Queensland, the couple discovered the popular Elizabeth design that offered the flexibility of a floorplan they could adapt, a budget that suited, and freedom to build at their own pace.

The couple made unique modifications, such as raising the home up off the ground to capture the breeze as well as the stunning views. They added an alfresco area and verandah all the way around, turning the home into a modern Queenslander.

### INTERNAL CHANGES

The kitchen was changed dramatically with the addition of a huge

pantry, measuring by 4 metres by 1.6 metres. "Lisa is a baker and she now has a stall at the local markets," David said.

The redesign also separated the kitchen from the family area, creating the perfect spot for the grand piano.

## TALK YOU THROUGH

Although the Stuarts had no previous building experience, they rose to the challenge. "It's a hell of a learning curve," said David, but there was advice along the way from a builder friend and a neighbouring roofer. And Paal was always at the end of the phone.

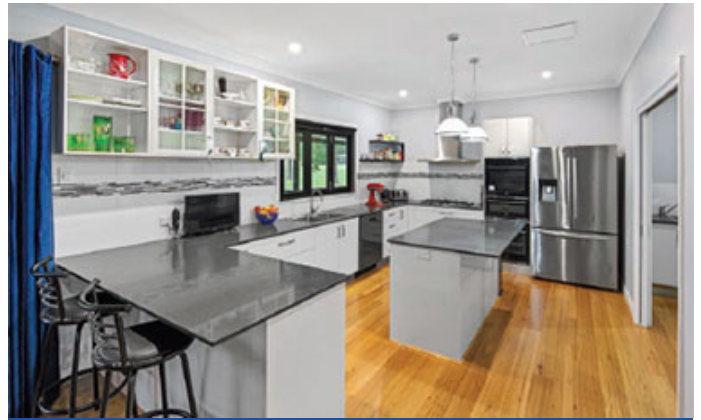
"It was easy just to ring up and there was someone who could talk you through what you were doing."

## MASSIVE SATISFACTION

The couple were thrilled with the Paal building process and the final result, as well as being proud of their achievement.

"My wife and I are very fit now," David said. "My golf has improved out of bounds!" With an ideal home to suit their new interests and lifestyle, they're looking forward to the next chapter.

"We wanted to design our own home, with input into how it turned out. We also wanted to give ourselves the massive satisfaction of saying that we built this ourselves. This is exactly what happened."



*The kitchen has a huge adjoining pantry (entrance on right of photo).*



*The Stuarts' redesign separated the kitchen from the family area, creating a space for the grand piano.*



# Chris Nobis, 1936-2021

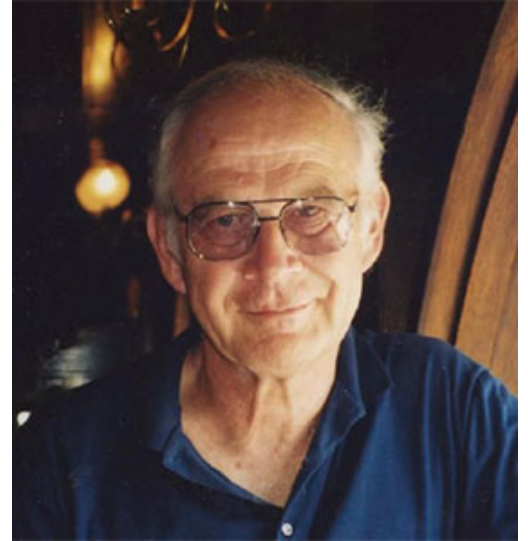
Paal Kit Homes founder Chris Nobis, who died last year, began Paal from scratch 50 years ago and grew it to the highly successful company it is today.

His eldest son Eddy has been running the business for the past six years, after Chris retired to look after his ailing wife Ursula.

Chris was born in Spain to German parents who were working there for the engineering company Siemens. The Spanish civil war forced them to flee home to a Germany then ruled by the Nazis.

When World War II broke out, young Chris was evacuated to the countryside, though remembered the fires in Berlin as the war drew to a close. He later studied engineering and travelled the globe negotiating patents and contracts for the Liechtenstein-based company Hilti.

After that, he worked in the Belgian town of Paal for a company that had developed a modular home building system.



## PIONEERING MIGRANTS

Sydney remained Chris's favourite city from his days of working for Hilti. Wanting to develop his own company, Chris adventurously set off with Ursula, settling at first in the lower Blue Mountains.

He established the fledgling Paal business in a disused dairy shed in Penrith in Western Sydney before building a state-of-the-art factory in nearby Emu Plains.

The young migrant used his European work experience to pioneer the use of lightweight steel frames in house and garage construction in Australia. Steel framing was relatively new, but Chris used to say that termites were his best salesmen.

He experimented with light gauge, high tensile frames which proved a big winner.

## ONGOING INNOVATION

Paal has thrived since those early days, despite the ups and downs of a building industry that tested Chris and his company, and led to continuing innovation in its home designs and the way in which they are manufactured.

With almost 6000 homes now completed throughout Australia, Paal Kit Homes is the undisputed leader in kit homes designed for the owner-builder and the owner-manager.

## TIMELESS VALUES

Although Paal's houses are more sophisticated than in the early days, the company is still driven by the timeless values of integrity, honesty and loyalty that Chris Nobis brought to it.

Customers are at the core of the experience. From the first consultation through to the completed home, Paal is always there to back up and ensure the success of the project.

Chris's legacy of enterprise and trust continues to be the bedrock on which the company operates.



*Chris Nobis on site at Paal, Emu Plains, in the 1970s.*

**PAAL** Update  
Print-friendly version

**PAAL**<sup>®</sup>

[www.paalkithomes.com.au](http://www.paalkithomes.com.au)

[Unsubscribe](#)



Visit our Facebook page

Copyright © 2022 PAAL Homes Pty Ltd